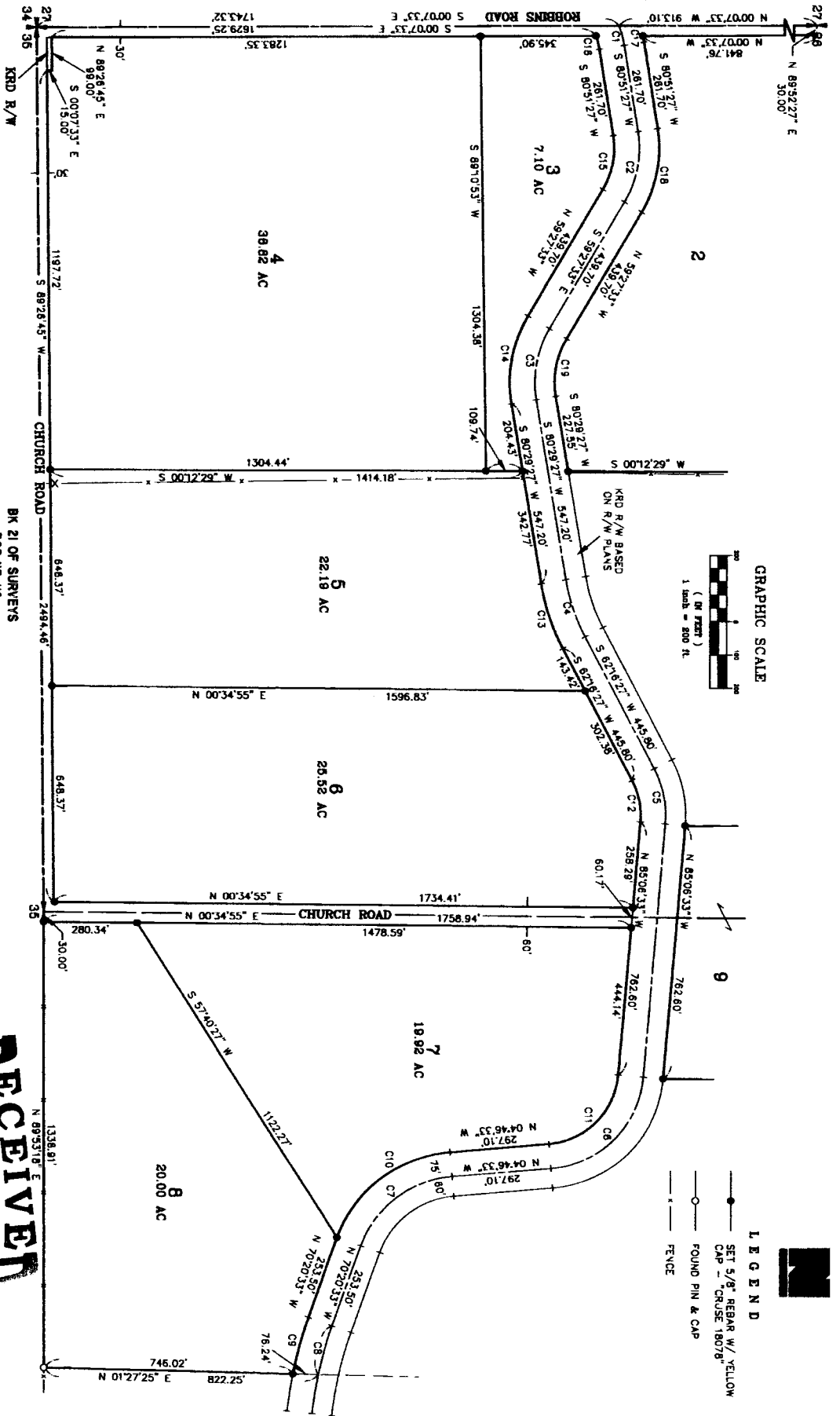


PART OF SECTION 26, TOWNSHIP 19 NORTH, RANGE 18 EAST, W.M.

Existing

200104220015

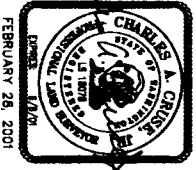
2b-10



CURVE	RADIUS	LENGTH	DELTA	CURVE	RADIUS	LENGTH	DELTA
C1	286.48	80.00	120.00°	C11	226.56	317.66	60.20°
C2	318.31	220.46	59.41°	C12	226.56	317.66	60.20°
C3	318.31	222.50	40.03°	C13	547.98	208.07	181.30°
C4	572.96	182.77	181.30°	C14	393.31	274.83	40.03°
C5	307.56	171.67	32.37°	C15	243.31	168.52	39.41°
C6	307.56	422.81	60.20°	C16	211.48	40.98	110.08°
C7	318.26	364.20	65.34°	C17	348.48	18.76	03.06°
C8	1145.92	150.53	07.31°	C18	378.31	262.02	39.41°
C9	1220.92	174.50	08.11°	C19	258.31	180.58	40.03°
C10	383.28	450.03	65.34°				

BK 21 OF SURVEYS
PGS 117-118

SHEET 2 OF 3



AUDITOR'S CERTIFICATE
Filed for record the 20th day of FEBRUARY, 2001, at Lee, in Book 28 of Surveys at page(s) 10, at the request of Cruse & Nelson.
BEVERLY M. ALLENBAUGH BY: Bev
KITITAS COUNTY AUDITOR

RECEIVED
MAY 24 2018

Kititas Co. CDS

CRUSE & NELSON
PROFESSIONAL LAND SURVEYORS
217 East Fourth Street
Blensburg, VA 98926
P.O. Box 959
(509) 923-4747
PEMRITE PROPERTY